



GSCC – General Storage Cluster Controller

IBM Tivoli Storage Manager High Availability Solution



Highlights

- Scalable TSM High Availability
- Works with mixed TSM V5 and V6 Server Installations
- Supports DB2 HADR with TSM V6
- Completely integrated solution
- „carefree package" - customized implementation
- Object-oriented State Model: Simple maintenance despite high customization
- Time shifted „Standby“ database with or without HADR, increasing availability
- Supports smooth, easy migration from TSM V5 to V6
- AIX, Solaris and Linux
- Supports LVM, VxVM, SVM, GPFS
- „Ready for IBM Tivoli Software“ certification

GSCC is a High Availability solution especially for IBM Tivoli Storage Manager.

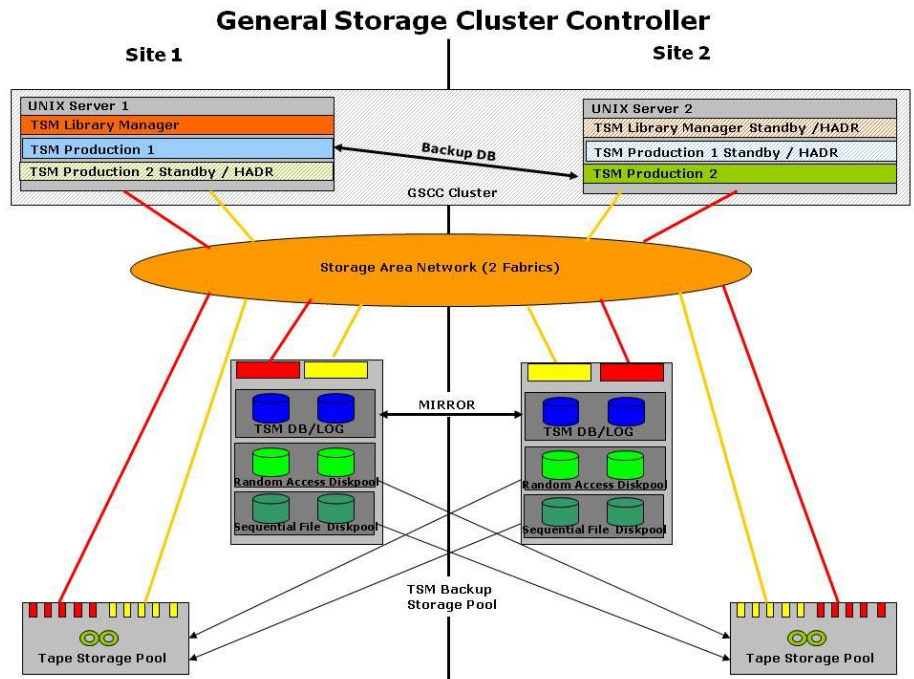
GSCC is not a conventional server cluster, but a specialized application-cluster designed for IBM TSM requirements.

A GSCC Cluster usually consists of two UNIX systems hosting one or more active TSM instances. GSCC controls TSM instances and their resources as independent units.

GSCC is transparent to clients and agents. It can easily be integrated into existing TSM installations..

With help of an object-oriented state model GSCC provides a high level of customization without compromising serviceability.

The GSCC implementation is usually not limited to the core software functionality. On request the whole TSM environment is verified and standard configurations and naming conventions are established in order to improve manageability and serviceability.

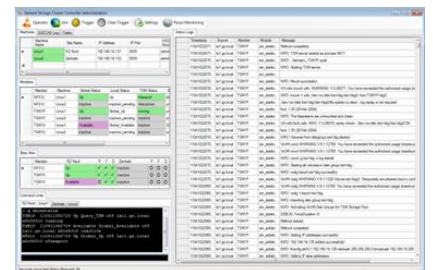


In case it is impossible to keep the TSM instances or its resources up on the local machine a take over will be initiated. GSCC supports two take over methods. In order to optimize availability. Primarily a disk failover takes place. Alternatively a time shifted „Standby“ database can be activated to recover from logical errors.

This „Standby“ or „Recovery“ TSM instance has its own resources for database and log. GSCC uses these resources to recover the production database regularly providing a time shifted version of the production database – optionally utilizing HADR with TSM V6.

With that the TSM database recovery is also verified regularly. Furthermore the „Standby“ database can be used to perform TSM maintenance activities (auditdb, unloaddb and TSM V6 migration) without affecting production.

GSCC provides a graphical user interface to manage GSCC and TSM instances



GSCC is currently available for IBM AIX, SUN Solaris and Linux. Further platforms are already tested.



General Storage GbR
Storage Management Development
Hagenstraße 38
68623 Lampertheim
 All Rights Reserved
www.general-storage.de
support@general-storage.de

