

Actview V7 – TSM server and client analysis

Tool for analyzing the processes of an IBM Tivoli Storage Manager backup environment



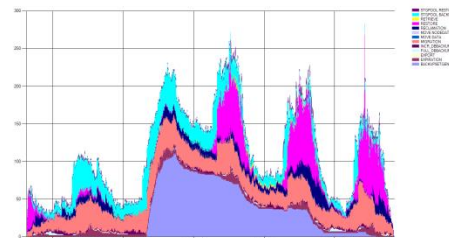
Highlights

- optimization
 - TSM server processes
 - migration
 - reclaim
 - expiration
 - storage pools
- optimization process-scheduling
- optimization client settings
- optimization client throughput

Analyze your TSM environment

In most TSM environments an integrated view of all resources and processes is very difficult. The large number of integrated components (client, network, disk speeds, SAN, tape drives ...) complicates a holistic view. Such relationships, which can be queried only very laboriously over the TSM Command Line, Actview provides a simplified graphical view.

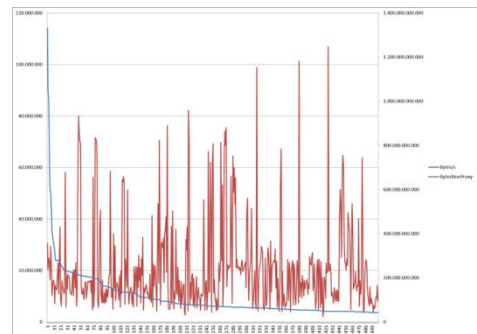
Number of concurrent sessions and processes across all TSM Server without Backup and Archive



You can, for example, view at the same time as server processes (migration, Reclaims, backups, restores, ...) work.

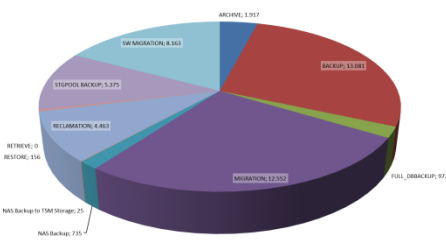
With ActView you can also view all information. This can then spend on the File function in a comma separated list and eg Import to Excel.

500 largest backups – Amount in Bytes (blue, right) vs. Bytes/s (red, left)

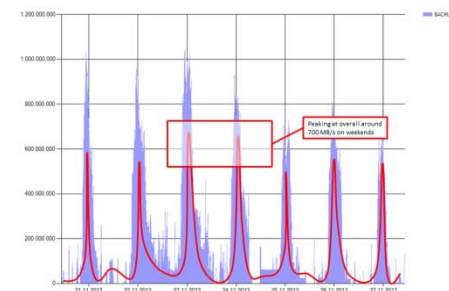


ActView evaluates this information in a table. This then can be according to various criteria, such as let fastest backup or restore, organize.

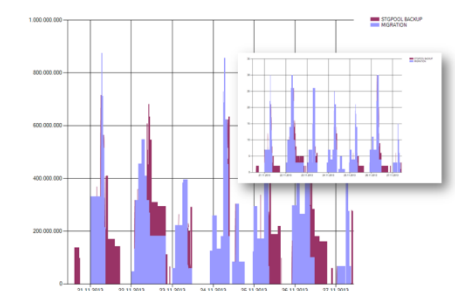
Overview – Daily Throughputs (average over 7 consecutive days)



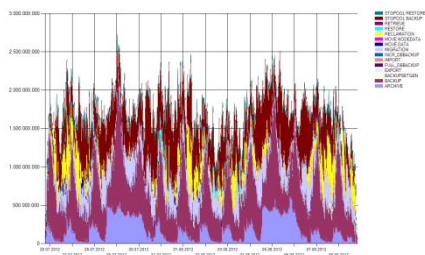
Overall Throughput as reported by TSM vs. real Throughput without Proxy Data (Backup)



Reading from Disk Migration and Backup Stgpool Throughput in Bytes/s and Number of concurrent Sessions



TSM overall performance of all servers processes and sessions in bytes / s



Actview is a service offering from General Storage that takes care of exactly this holistic view. Using TSM SQL queries vulnerabilities are analyzed and can actively intervene on the basis of the information. Problems do not develop from one day to another but over a longer period.

Furthermore, they can be created individually with Actview reports. To this end, they just need to preselect the desired information. For example, which clients secure the fastest or how fast are my fastest restores.

We want to emphasize that these simulations at all accuracy of the results can only ever be a basis for discussion of a detailed concept.

Conclusion:
backups will be faster, processes are distributed, costs are brought down.

Tivoli. software

General Storage GbR
Storage Management Development
Hagenstraße 38
68623 Lampertheim
All Rights Reserved
www.general-storage.de
support@general-storage.de

© Copyright by General Storage 2015

